

Shape Memory Polymer

The complete embolization solution



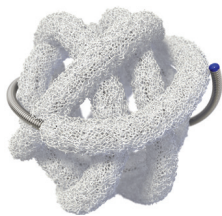
IMPEDE®
Embolization Plug



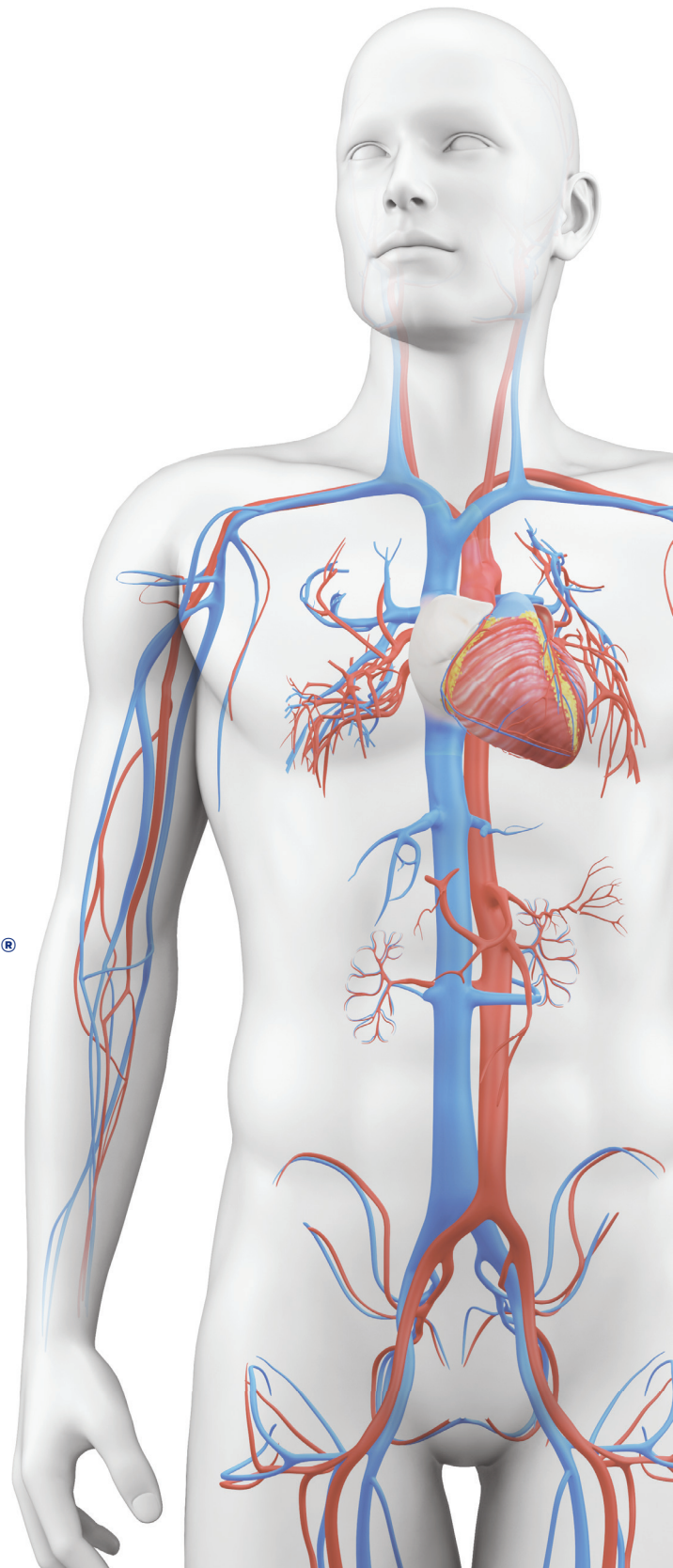
IMPEDE-FX
Embolization Plug



IMPEDE-FX RapidFill®
Device



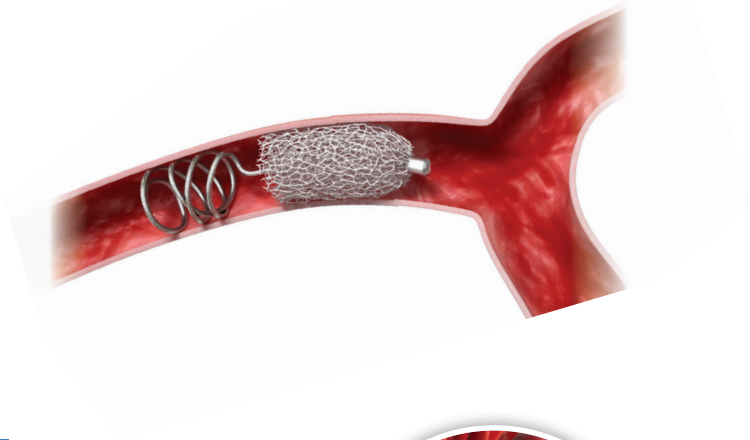
TrelliX®
Embolic Coil



The science of Shape Memory Polymer

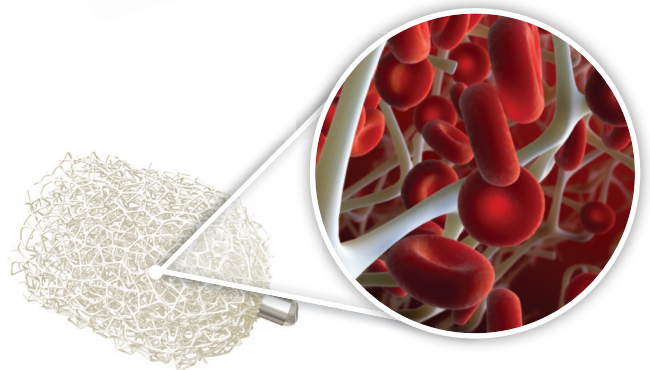
PREDICTABLE SPACE FILL

Uniform, high volume space fill
Controlled deployment and fill
Compliant, conformable material



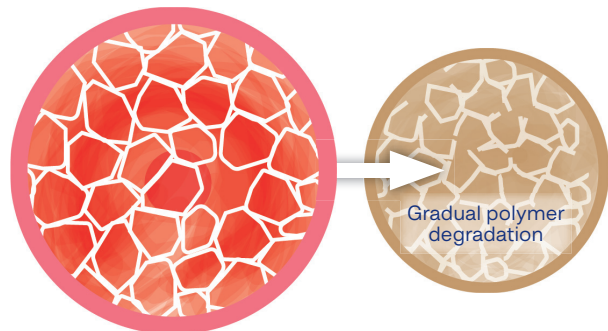
STABLE CLOT FORMATION

Thrombus formation throughout
porous embolic scaffold[†]



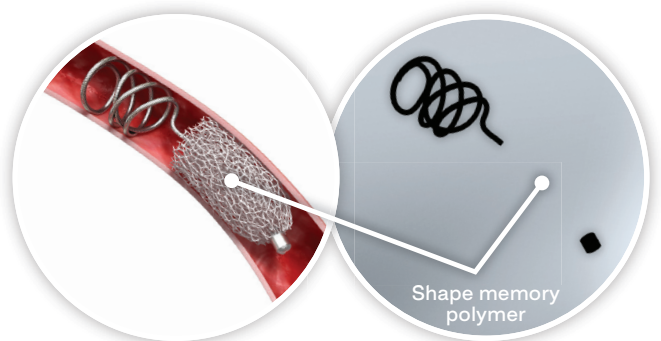
PROGRESSIVE HEALING

Conversion of acute thrombus to
mature connective tissue
No chronic, active inflammation[†]
Gradual, steady rate of shape
memory polymer degradation[†]



CLEAR IMAGING

Radiolucent shape memory
polymer facilitates procedural
and follow-up imaging of
surrounding anatomy



Shape Memory Polymer family

Peripheral vascular embolization

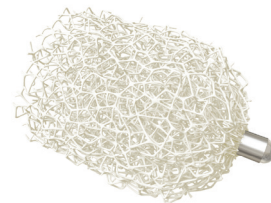
IMPEDE Embolization Plug

Up to **1.25 mL** volume fill capacity
Nitinol anchor coil for secure positioning
Beneficial in high flow conditions



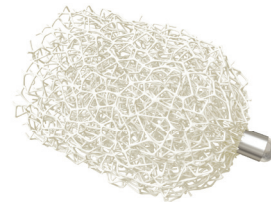
IMPEDE-FX Embolization Plug

Up to **1.25 mL** volume fill capacity
Short landing zone required
Minimal radial force for low vessel trauma



IMPEDE-FX RapidFill

~6.25 mL embolic material in a single step
Rapidly fills space when multiple devices are indicated
Less radiation and contrast
Shorter procedure times



TrelliX Embolic Coil

Reach distal, tortuous anatomy
3x packing density compared to bare metal coil
0.021" microcatheter compatible
0.030" expanded polymer nominal diameter



Dimensions & details

IMPEDE Family (Pushable)

			IMPEDE			IMPEDE-FX			IMPEDE-FX Rapid Fill
			IMP-05	IMP-07	IMP-10	IMP-FX-06	IMP-FX-08	IMP-FX-12	IMP-FX-12x5
Vessel diameter	mm		2 – 5	4 – 7	6 – 10	–	–	–	–
Proximal marker diameter	inch		.032	.046	.065	.032	.046	.065	.065
	mm		0.81	1.17	1.65	0.81	1.17	1.65	1.65
Expanded SMP plug diameter	mm		6	8	12	6	8	12	12
SMP plug length	mm		10	10	15	10	10	15	15
Anchor coil diameter	mm		7	9	13	–	–	–	–
Anchor coil length	cm		8	9	15.5	–	–	–	–
Catheter ID*	min	inch	.038	.055	.070	.038	.055	.070	.070
	max		.057	.071	.090	.057	.071	.090	.090
	min	mm	0.97	1.40	1.78	0.97	1.40	1.78	1.78
	max		1.45	1.80	2.29	1.45	1.80	2.29	2.29

SMP, shape memory polymer. *Catheter recommendations based on .035" guidewire.

TrelliX Embolic Coil

		Length LL (cm)							
Part Number	Diameter (mm)	02	04	06	08	10	12	15	20
TCF-18-03-LL	3	●	●	●	●	●			
TCF-18-04-LL	4			●	●	●	●		
TCF-18-05-LL	5			●	●	●		●	
TCF-18-06-LL	6				●	●		●	
TCF-18-07-LL	7						●	●	●
TCF-18-08-LL	8							●	●
TCF-18-09-LL	9							●	●
TCF-18-10-LL	10							●	●
TCF-18-11-LL	11								●
TCF-18-12-LL	12								●
TCF-18-14-LL	14								●
TCF-18-16-LL	16								●
TDC-1	TrelliX Detachment Controller (5-pack)**								

TrelliX Embolic Coils are compatible with standard .021" microcatheters. SMP self-expands to .030" nominal diameter in vessel. **Electrolytic detachment mechanism, single-use disposable.

INDICATION: The IMPEDE Embolization Plug, the IMPEDE-FX Embolization Plug, and the IMPEDE-FX RapidFill are indicated to obstruct or reduce the rate of blood flow in the peripheral vasculature.

INDICATION: The TrelliX Embolic Coil System is intended to obstruct or occlude blood flow in vascular abnormalities of the neurovascular and peripheral vessels. Indications include: Intracranial aneurysms, other neurovascular abnormalities such as arteriovenous malformations and arteriovenous fistulae, arterial and venous embolizations in the peripheral vasculature.

INDICATION: The TrelliX Detachment Controller is intended for use with the TrelliX Embolic Coil System which is intended to obstruct or occlude blood flow in vascular abnormalities of the neurovascular and peripheral vessels. Indications include: Intracranial aneurysms, other neurovascular abnormalities such as arteriovenous malformations and arteriovenous fistulae, arterial and venous embolizations in the peripheral vasculature.

‡ Evidence from preclinical studies. The images are illustrative and do not represent actual vessel anatomy, nor the actual size of any products.

Patent: www.shapemem.com/patents

Shape Memory Medical, IMPEDE, IMPEDE-FX RapidFill, and TrelliX are registered trademarks of Shape Memory Medical, Inc.

Indications, contraindications, warnings, and instructions for use can be found in the product labeling supplied with each device.

www.shapemem.com



CE 0297

LIT1023 Rev D

© 2022 Shape Memory Medical Inc. All rights reserved.
807 Aldo Avenue, Suite 109, Santa Clara, CA 95054 USA
+1.408.649.5175 | info@shapemem.com | www.shapemem.com