

TrelliX® Embolic Coils

FOR PERICALLOSAL ARTERY ANEURYSM

CASE STUDY

Odense University Hospital
Odense, Denmark

Gyula Gál, MD
Department of Radiology

A 51-year-old male was diagnosed with multiple cerebral aneurysms, including an 8 mm x 6 mm left pericallosal artery aneurysm which was planned for embolization. The aneurysm neck was moderately wide; therefore, the need to place a stent in the parent vessel was to be determined.

Coil embolization was planned using Trellix Embolic Coils. An Envoy (Johnson & Johnson) guiding catheter was used and the aneurysm was accessed with a Prowler Plus (Johnson & Johnson) microcatheter for coil delivery.

The first Trellix coil (7x20) formed a nice first coil basket upon delivery. Three additional coils (one 5x15, and two 3x4) were deployed, followed by angiography which showed some remaining inflow with distal thrombosis. After 15 minutes, a final angiogram was performed showing complete thrombosis. At 14-month follow-up, the aneurysm remained occluded.

Key Takeaway: Treatment of a wide-neck aneurysm with the Trellix Embolic Coil could be completed without the use of adjunctive devices.

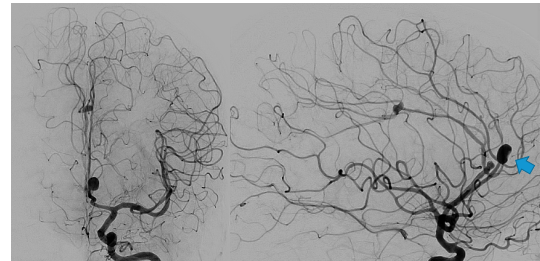
Angiography confirmed embolization due to the expanding shape memory polymer.

Imaging clarity enabled visibility through the coil mass and of surrounding anatomy.

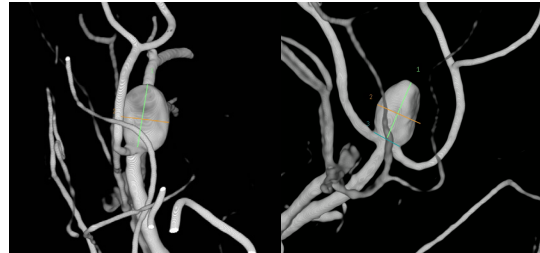
INDICATION: The Trellix Embolic Coil System is intended to obstruct or occlude blood flow in vascular abnormalities of the neurovascular and peripheral vessels. Indications include intracranial aneurysms, other neurovascular abnormalities such as arteriovenous malformations and arteriovenous fistulae, and arterial and venous embolizations in the peripheral vasculature.

INDICATION: The Trellix Detachment Controller System is intended for use with the Trellix Embolic Coil System which is intended to obstruct or occlude blood flow in vascular abnormalities of the neurovascular and peripheral vessels. Indications include intracranial aneurysms, other neurovascular abnormalities such as arteriovenous malformations and arteriovenous fistulae, and arterial and venous embolizations in the peripheral vasculature.

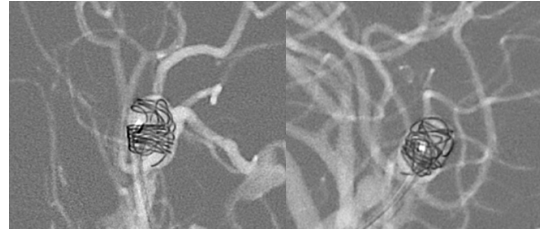
BASELINE IMAGING



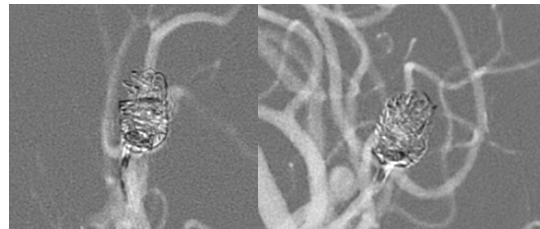
8 MM X 6 MM WIDE-NECK ANEURYSM



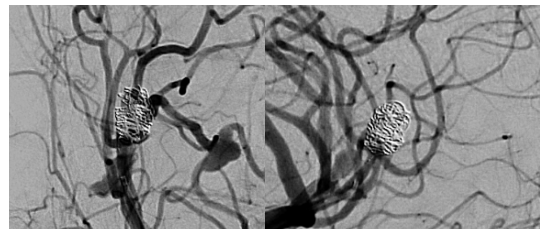
FIRST TRELLIX COIL (7X20)



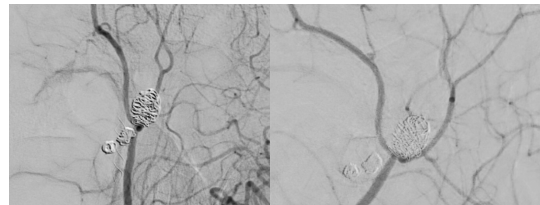
THREE ADDITIONAL TRELLIX COILS



POST EMBOLIZATION



14-MONTH FOLLOW-UP



Patent: www.shapemem.com/patents
Shape Memory Medical and Trellix are registered trademarks of Shape Memory Medical Inc.
Indications, contraindications, warnings, and instructions for use can be found in the product labeling supplied with each device.

CE 0297

LTI040 Rev B.

shape
memory medical

© 2021 Shape Memory Medical Inc. All rights reserved.
807 Aldo Avenue, Suite 109, Santa Clara, CA 95054 USA
+1.408.649.5175 info@shapemem.com | www.shapemem.com