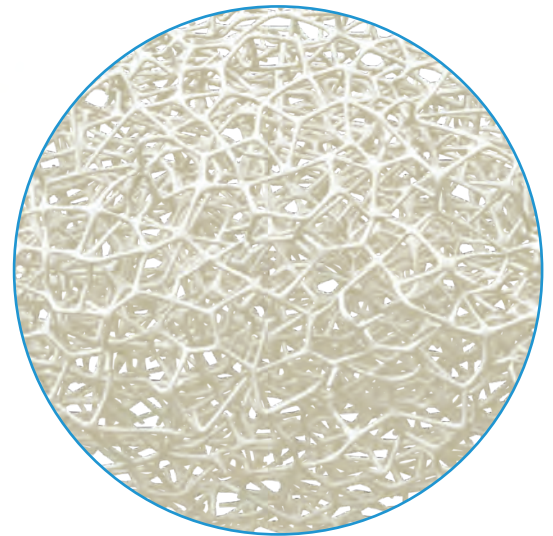
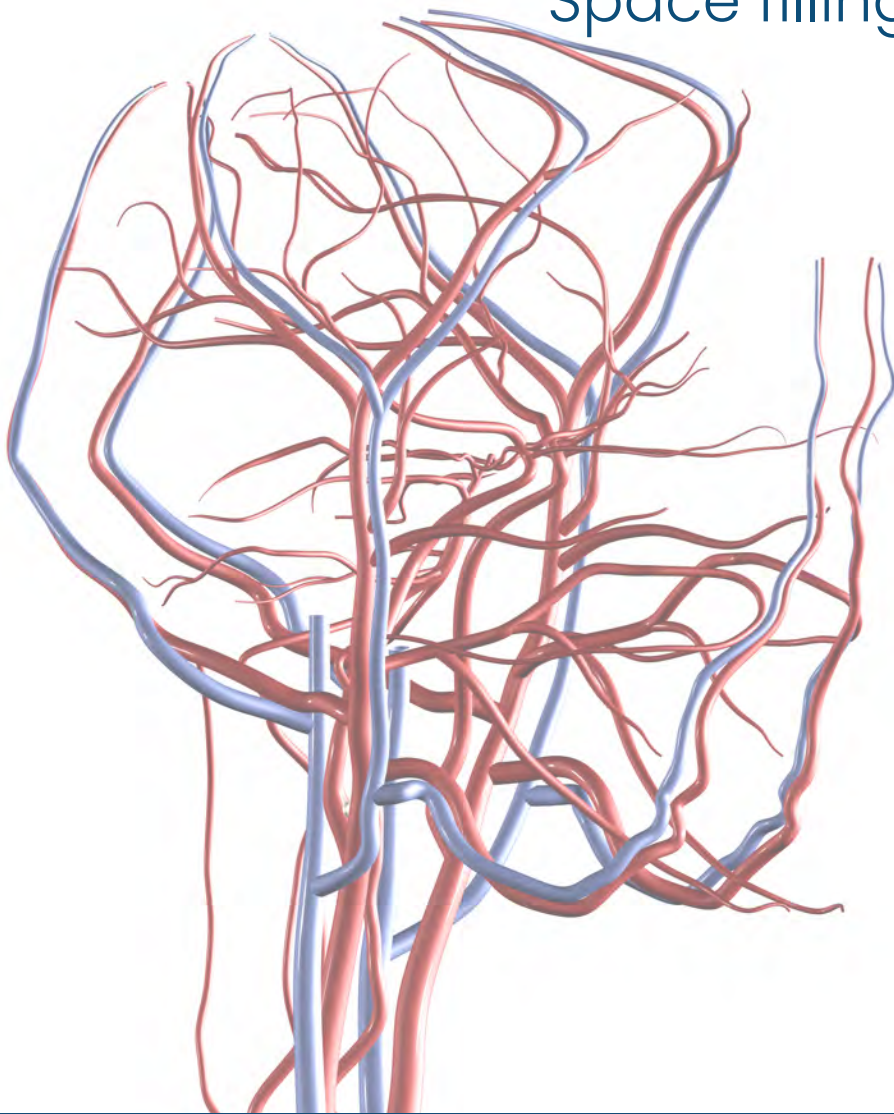


# TrelliX<sup>®</sup> Embolic Coils Neurovascular

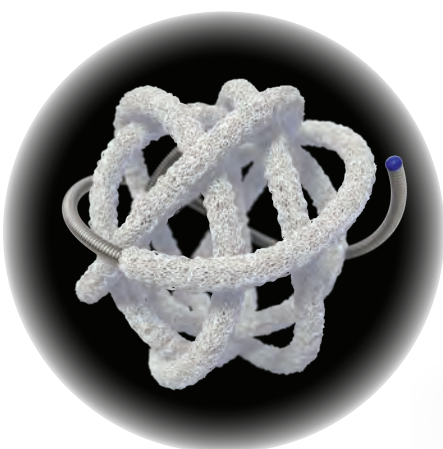
*With Shape Memory Polymer Technology*

High embolic material volume  
Space filling with low radial force  
Accelerated healing<sup>†</sup>  
Minimal artifact

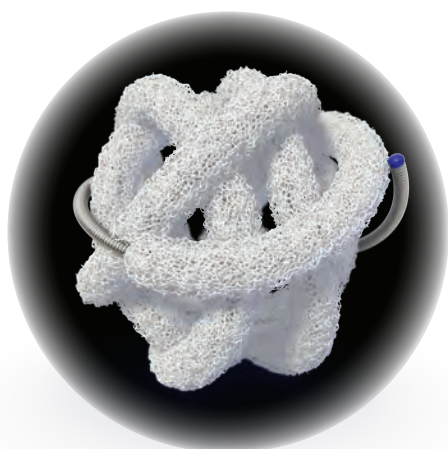


Shape memory polymer  
porous embolic scaffold

# TrelliX Embolic Coils



Crimped for catheter delivery



Self-expands on contact with blood

Porous embolic scaffold supports rapid formation of small interconnected clots

Rapid conversion to organized thrombus, followed by collagen deposition - without chronic active inflammation<sup>‡</sup>

High embolic material volume and packing density

Polymer has no imaging artifact, facilitating follow-up imaging

## Dimensions & Details

Part Number	Diameter (mm)	Length LL (cm)							
		02	04	06	08	10	12	15	20
TCF-18-03-LL	3	●	●	●	●	●			
TCF-18-04-LL	4			●	●	●	●		
TCF-18-05-LL	5			●	●	●		●	
TCF-18-06-LL	6				●	●		●	
TCF-18-07-LL	7						●	●	●
TCF-18-08-LL	8							●	●
TCF-18-09-LL	9							●	●
TCF-18-10-LL	10							●	●
TCF-18-11-LL	11								●
TCF-18-12-LL	12								●
TCF-18-14-LL	14								●
TCF-18-16-LL	16								●
TDC-1	TrelliX Detachment Controller (5-pack)*								

Coils are compatible with standard .021" microcatheters. Shape memory polymer self-expands to .035" diameter in vessel. \*Electrolytic detachment mechanism, single-use disposable.

**INDICATION:** The TrelliX Embolic Coil System is intended to obstruct or occlude blood flow in vascular abnormalities of the neurovascular and peripheral vessels. Indications include: Intracranial aneurysms, other neurovascular abnormalities such as arteriovenous malformations and arteriovenous fistulae, arterial and venous embolizations in the peripheral vasculature.

**INDICATION:** The TrelliX Detachment Controller System is intended for use with the TrelliX Embolic Coil System which is intended to obstruct or occlude blood flow in vascular abnormalities of the neurovascular and peripheral vessels. Indications include: Intracranial aneurysms, other neurovascular abnormalities such as arteriovenous malformations and arteriovenous fistulae, arterial and venous embolizations in the peripheral vasculature.

Indications, contraindications, warnings, and instructions for use can be found in the product labeling supplied with each device.

‡ Preclinical data on file. Patent: [www.shapemem.com/patents](http://www.shapemem.com/patents)

CE 0297

 **shape**memory medical

807 Aldo Avenue, Suite 109, Santa Clara, CA 95054 USA  
+1.408.649.5175 | [info@shapemem.com](mailto:info@shapemem.com) | [www.shapemem.com](http://www.shapemem.com)

LIT1011 Rev B