

# TrelliX® Embolic Coils

## FOR MALIGNANT AV FISTULA

## CASE STUDY

Odense University Hospital  
Odense, Denmark

Gyula Gál, MD  
Department of Radiology

A 59-year-old female presenting with pulsatile tinnitus was diagnosed with a malignant, dural arteriovenous fistula (DAVF). Baseline angiography revealed a focal narrowing of the sigmoid sinus and slow distal and mild retrograde flow. Significant retrograde flow into the inferior petrosal sinus, however, was noted, hitting the cavernous sinus and with cortical venous damage of the fistula. Although malignant, the patient could not tolerate her symptoms and consented to treatment.

Coil embolization was planned using Trellix Embolic Coils. A long Neuron MAX™ (Penumbra, Inc.) sheath was placed into the internal jugular vein, and the DAVF was accessed with a Prowler Plus (Johnson & Johnson) microcatheter for coil delivery. Following deployment of nineteen Trellix coils for a total of 275 cm coil length, digital subtraction angiography was performed to estimate remaining number of coils needed to achieve full occlusion. Whereas the need for additional coil embolization was anticipated, the fistula thrombosed and occluded. Follow-up angiography at 5 months confirmed permanent total occlusion of the DAVF and left sigmoid sinus. The patient recovered well and was pleased with the outcome.

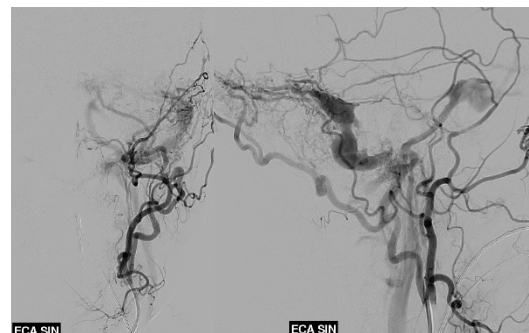
*“Complete AVF occlusion with Trellix Embolic Coils was achieved with fewer number of devices than expected.”*

**Gyula Gál, MD**

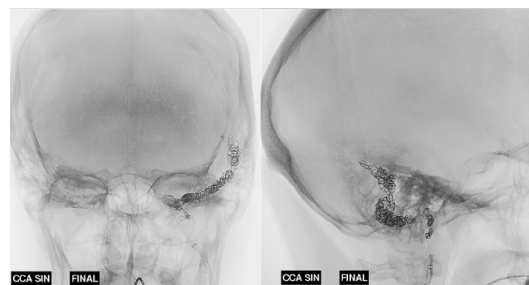
**INDICATION:** The Trellix Embolic Coil System is intended to obstruct or occlude blood flow in vascular abnormalities of the neurovascular and peripheral vessels. Indications include intracranial aneurysms, other neurovascular abnormalities such as arteriovenous malformations and arteriovenous fistulae, and arterial and venous embolizations in the peripheral vasculature.

**INDICATION:** The Trellix Detachment Controller System is intended for use with the Trellix Embolic Coil System which is intended to obstruct or occlude blood flow in vascular abnormalities of the neurovascular and peripheral vessels. Indications include intracranial aneurysms and arteriovenous malformations and arteriovenous fistulae, and arterial and venous embolizations in the peripheral vasculature.

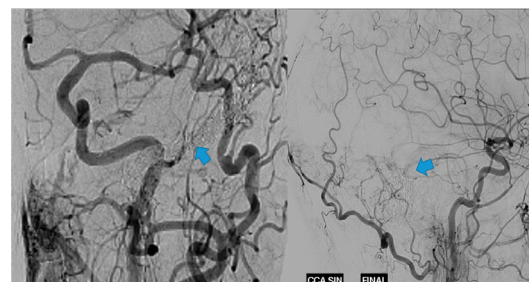
### BASELINE IMAGING



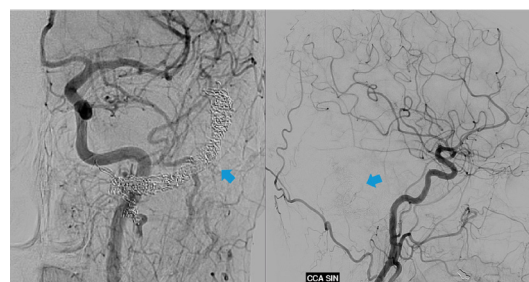
### POST DEPLOYMENT, 19 TRELLIX COILS



### POST DEPLOYMENT, 19 TRELLIX COILS



### 5-MONTH FOLLOW UP



Patent: [www.shapemem.com/patents](http://www.shapemem.com/patents)  
Shape Memory Medical and Trellix are registered trademarks of Shape Memory Medical Inc.  
Indications, contraindications, warnings, and instructions for use can be found in the product labeling supplied with each device.

CE 0297

LTI1039 Rev B.

**shape**  
memory medical

© 2021 Shape Memory Medical Inc. All rights reserved.  
807 Aldo Avenue, Suite 109, Santa Clara, CA 95054 USA  
+1.408.649.5175 info@shapemem.com | www.shapemem.com